



Wireless

As we become more mobile in the way we work organisations are looking to technology partners who can address the growing need from businesses to provide an 'always on' wireless connectivity function. Whether this is at the office, in a hotel or at an airport people recognise a wireless connection is a necessity rather than a luxury. Just as they can roam using their mobile phone, users also require the same level of convenience when accessing an internet connection through a laptop or other wireless device.

Access all areas

In order for any wireless implementation project to run successfully you need to ensure the right amount of planning has been put in place. Evolved has a tried and tested formula to compile a comprehensive site survey. This survey maps out the Radio Frequency (RF) area, measures interference, any channel overlaps and records what cable runs are required. The site survey documentation becomes a key reference tool for the customer and includes maps of the RF coverage, photographs of the wireless device locations and technical recommendations.

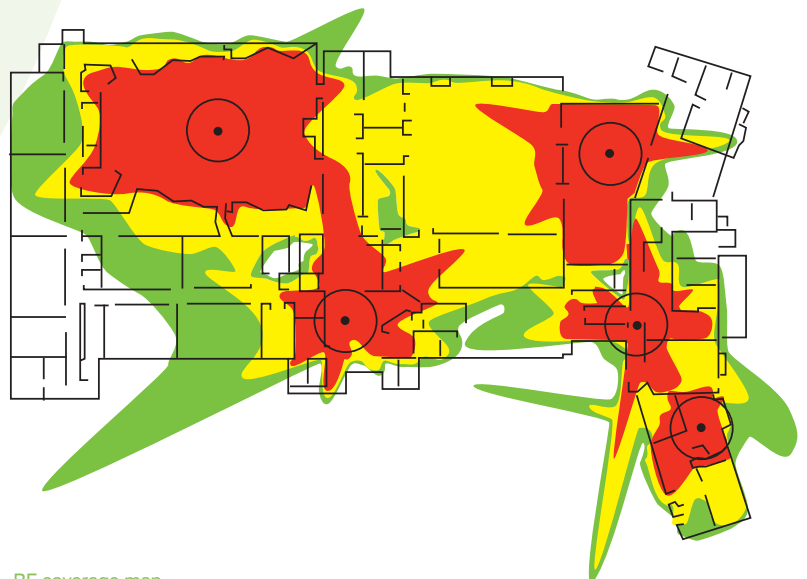
Evolved are proud to deliver wireless LAN security testing and wireless LAN health checks that provide customers with elements such as penetration testing and performance analysis. These areas, coupled with the wireless LAN installation and commissioning services ensure all partners can be confident that no stone is left unturned when setting up a wireless network.



Wireless services

Wireless LAN site survey

- > Multi vendor surveys on any 802.11 standard
 - Map out the RF area
 - Spectrum analysis
 - RF Interference
 - Measurement of SNR
 - RF power peaks
 - Channel interference
 - Channel overlap
 - Cable runs required
- > The site survey documentation will include:
 - Photographs of the location of all wireless equipment
 - Maps of the RF coverage
 - Details of RF interference
 - Antenna review and recommendations
 - Wireless solution recommendations



RF coverage map

Wireless LAN health check

- > Review of existing WLAN performance
 - Poor performance / throughput
 - RF interference
 - Find rogue access points
 - Locate dead spots
 - Client connection problems
- > Health check methods
 - Airmagnet passive scans of the RF environment
 - Packet analysis
 - Packet decodes
 - Spectrum analysis
- > The health check documentation will include
 - Maps of the RF coverage
 - Detection, measure and recording of the presence of RF interference
 - Diagnostics of common wireless problems - Hidden node, near far, sticky client etc
 - Recommendations for fault resolution

Wireless LAN security testing

- > Is your WLAN secure?
 - Penetration testing
 - Wireless LAN detection
 - Rogue access point detection
 - Frequency scanning
 - Packet capture
 - Authentication analysis
 - Encryption analysis
- > The security report will include
 - Tests performed
 - Tools used
 - Detailed results
 - Future security recommendations

Wireless LAN installation and commissioning

- > Infrastructure installation
 - Multi vendor support
 - Controller based LWAPP solutions
 - Autonomous access points
 - 802.11a,b,g and n
 - Antenna installations
 - Advanced security (802.1x)
 - AD and radius integration
- > Wireless bridge links
 - Replace costly leased lines
 - Ideal for redundancy
 - Line of site required
 - Site surveys available
- > Wireless location based services
 - High-value asset tracking
 - Location-based security
 - Physical security
 - Personnel tracking

